
HOTEL

Category: *****

Rooms: 65 rooms, 5 suites
and 2 apartments

Beds: 140

Open:

Winter: from mid-December to mid-April

Summer: from mid-June to end-September

Management: Claudia and Hans-Jörg Walther

Riffelalp Resort 2222 m

3920 Zermatt – Switzerland

Phone: ++41 27 966 05 55

Fax: ++41 27 966 05 50

www.riffelalp.com

reservation@riffelalp.com

JOURNEY / SITUATION
4-7

LIVING / FOOD & BEVERAGE
8-10 / 11

LEISURE / CHILDREN
12-13

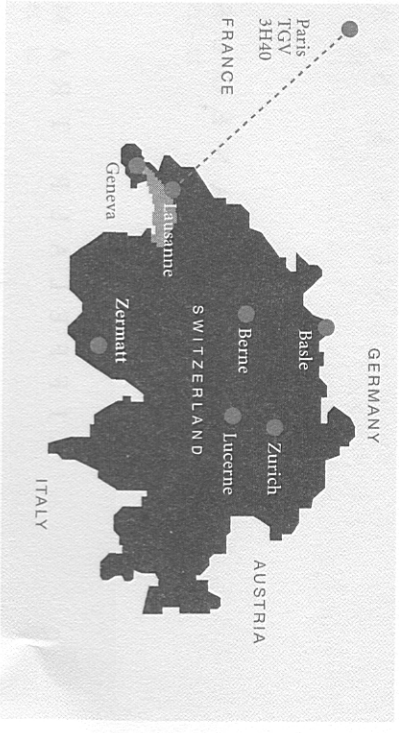
SUMMER / WINTER
14-19

WELLNESS & SPA
20-21

MISCELLANEOUS
22-23

RIFFELALP TRAM
24-25

HISTORY
26-27



LOCATION SUMMARY

The Riffalp Resort 2222 m lies at 2,222 m (7,290 ft.) above sea level on the southern edge of a plateau, in the heart of the Gornergrat skiing/hiking district. The location offers a breathtaking alpine panorama (directly facing the Matterhorn), while benefiting from the favourable micro-climatic conditions of the plateau. **Riffalp Resort 2222 m can only be reached by Gornergrat mountain railway.**

HOW TO GET TO SWITZERLAND:

Welcome to Switzerland! And this is how the journey continues...
www.swiss.ch www.sbb.ch www.avis.ch www.hertz.ch

Comfortable taxi transfer from your arrival airport in Switzerland to Zermatt. Air Zermatt also offers helicopter transfers to Zermatt. Our Concierge will be happy to assist you.

HOW TO GET TO ZERMATT:

By car:

Drive to the village of Täsch, where we welcome you in our Welcome Parking area. Reservations via the Hotel or directly at:
 Phone: +41 27 967 01 70, Fax: +41 27 967 01 71
www.welcomeparking.com
 Road report and route planner: www.tcs.ch www.viamichelin.com

By train:

... directly to Zermatt:

Visitors travelling from Geneva should change at Visp or Brig (not all express trains stop at Visp). If you are coming from Basle, Zurich, Bern or Milan, change at Brig. Passengers on the "Glacier Express" from Chur or St. Moritz can travel directly to Zermatt! www.sbb.ch

FLY-RAIL-BAGGAGE / BAGGAGE TRANSFER

There are several options of sending your luggage from home or anywhere within Switzerland directly to Riffelalp. The regulations depend on the departure point and the airline. Information is available at your departure point or from the Riffelalp Concierge.

Once you have arrived at Zermatt, our local Porter will be glad to help you! The Porter will look after your luggage and escort you to the Gornergrat railway. You will be given the tickets for the train. Upon your arrival at Riffelalp, the Riffelalp Porter will take over your luggage, while you can either take a transfer or enjoy a short walk (5 min.) to the Hotel.

Late arrival: In this case you have the option to have dinner at the village before boarding the late train at 9:50 pm or 11:30 pm.

WARNING: There are no trains operating between 7:12 pm and 9:50 pm!

For the late trains leaving at 9:50 pm and 11:30 pm the station will open five minutes before departure. For visitors arriving later or leaving very early in the morning the only option is to spend the night in Zermatt.

Gornergrat Bahn, click-clack, click-clack – say goodbye to your fast-paced life and busy schedules

The leisurely 20-minute ride on the cogwheel train takes you through a breathtaking scenery to the Riffelalp plateau at 2,222 metres above sea level.

During summer our private tram (Europe's highest) takes you through the wonderfully fragrant stone pine forest from Riffelalp station to the Resort. In winter we provide a transfer by snowmobile.

The train ride between Zermatt and Riffelalp as well as the transfer to the Resort on your arrival and departure days are included in the room rate.

The last train to Riffelalp leaves Täsch at 10:30 pm and Zermatt at 11:30 pm.

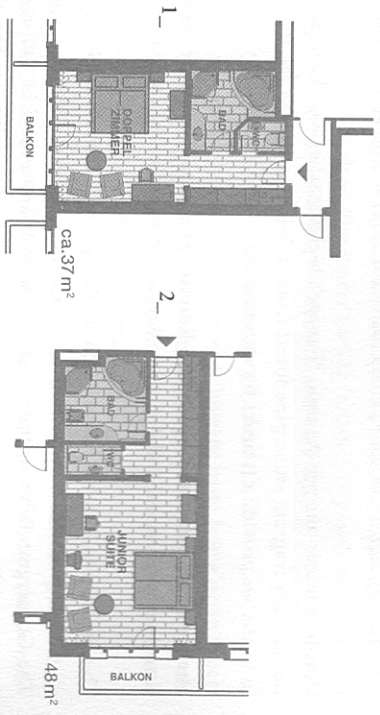
The Gornergrat Bahn operates daily from 8:00 am until 5:12 pm every 24 minutes. For schedules and times please refer to the enclosed time table.

To ensure a smooth arrival at our Resort please inform us of your arrival time.

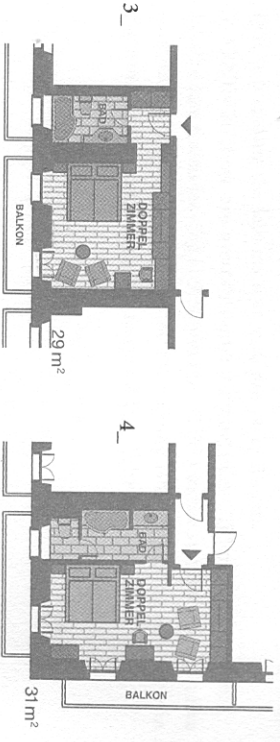
8 L I V I N G

JUST BEAUTIFUL LIVING

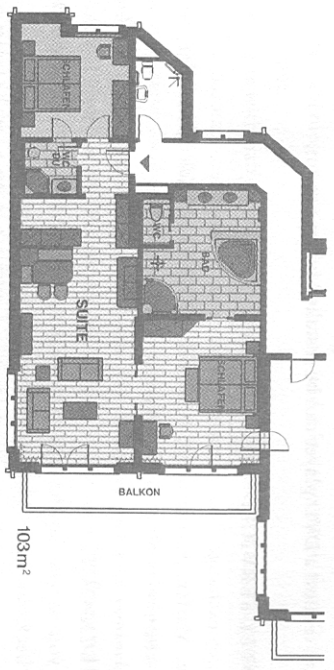
- 1_ 37 exclusive "Chalet"-style twin-bedded rooms
- 2_ 11 grandiose "Chalet"-style junior suites



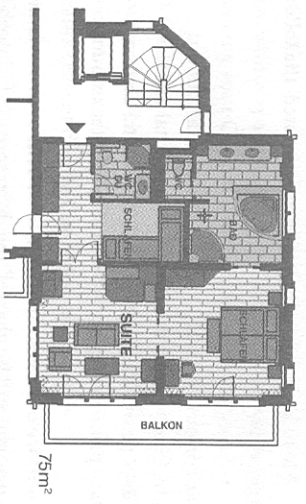
- 3_ 10 comfortable "Nostalgie"-style twin-bedded rooms
- 4_ 7 comfortable "Nostalgie"-style superior twin-bedded rooms



2 "Chalet"-style suites "Matterhorn"



3 "Chalet"-style suites "Monte Rosa"



2 spacious apartments in the "Alpenresidenz Angstkumme"

All rooms are fully equipped with five-star amenities, including Pay TV, modem and fax sockets, Wireless LAN and Bose stereo system. Most rooms have a balcony and offer breathtaking views of the Matterhorn. Upon request a DVD player can be installed in your room.

HOTEL SERVICE:

Money exchange. The following credit cards are accepted: Amexco, Diner's, Visa, Mastercard/Eurocard, JCB and EC-Direct. Concierge, laundry and dry-cleaning service. Room service.

CHECK-OUT:

On your arrival day the earliest check in time is at 3:00 pm. Please make sure to check out before 12:00 pm on your departure day. If you arrive or depart early, the locker and shower facilities in our Wellness area will be at your disposal.

CANCELLATION POLICY

If you are not able to keep your reservation as requested, the following cancellation charges apply:

30 or more days prior to arrival	0% of total amount
from 29 days to 15 days prior to arrival	30% of total amount
from 14 to 7 days prior to arrival	50% of total amount
from 6 to 0 days prior to arrival	100% of total amount

These costs only arise if we are not able to re-rent your room at the same value. Otherwise, you will be charged the difference.

RESTAURANT ALEXANDRE WITH TERRACE

Generous breakfast buffet from 7:00 am to 10:30 am
Wide variety of à la carte dishes at lunchtime from 12:00 noon to 2:30 pm
Gourmet evening menu with selections and à la carte menu from 7:15 pm to 9:30 pm.

For guests with half-board arrangement a table is reserved automatically.

RESTAURANT WALLISERKELLER

Here we serve local specialties like Fondue and Raclette from the open fire and meat dishes cooked on hot stones. For reservations please contact the Maitre d'Hotel or the Reception desk. Open in the evening from 6:30 to 11:00 pm.

LE PAVILLON / SUN DECK

Ski-hut favourites and many local delicacies like chalet soup or Matterhorn pizza – a must for all gourmets. Daily service from 11:00 am to 6:00 pm.

BAR – LODGE

Cosy lobby with a spacious bar area. Sit back and enjoy the piano music while savouring your Cocktail and the "Dolce far niente".

DINE AROUND

In addition to the rich and diverse cuisine at Riffelalp, visitors can enjoy their dinner at one of the Sella Hotels in Zermatt. There is a choice of 10 restaurants (except during Christmas and New Year).

Table reservations can be made until 12:00 noon at the Riffelalp Reception desk. The downhill journey is included in your ski or hiking pass, tickets for the uphill journey are provided by the Hotel.

For information on the children's table, please refer to the Children section.

OUTDOOR ACTIVITIES

Winter:

Ski-in and ski-out experience, ice-stick shooting, ice-skating, winter hiking, snowshoeing, tobogganing at Rotenboden, "Velogemel" (snow bicycle), Gorner Gorge, curling in Zermatt, paragliding, heliskiing, hotel's own ski guide.

Summer:

Hiking, Tennis (on Europe's highest tennis court), mountain climbing, paragliding, guided climbing tours, glacier hike to the Monte-Rosa hut, muleback riding, Gorner Gorge, hotel's own mountain guide for guided day tours.

INDOOR ACTIVITIES

Home cinema, billiards, cosy nooks and salons to relax, bowling, pool and wellness, fitness room, enjoying some peace and quiet and life at the hotel.

GOLF

From Riffelalp the 9-hole golf course in Randa can be reached by Gornergrat railway and a short taxi transfer.

We will arrange the transfer for you. Your golf bag will be waiting for you at our Welcome Parking in Täsch and your preferred tee-off times will be reserved.

YANN

Our hotel's own ski and hiking guide.

Our certified ski instructor and mountain guide leads guided day tours five times a week, from easy hikes to climbing majestic 12,000-foot peaks during summer. In winter snowshoeing, ski excursions, glacier skiing and heliskiing are on the agenda.

For further information please contact our Concierge.

The children can join our designated children's table every day after 6:00 pm.

KINDERGARTEN

In winter the Kindergarten is open Sunday through Friday from 3:00 pm to 10:30 pm. A certified Kindergarten teacher looks after your children between the ages of 2 and 8.

The indoor pool features an acoustically separated Kids Corner. The Pool area is not guarded. Children under the age of 16 are not allowed in the Wellness area.

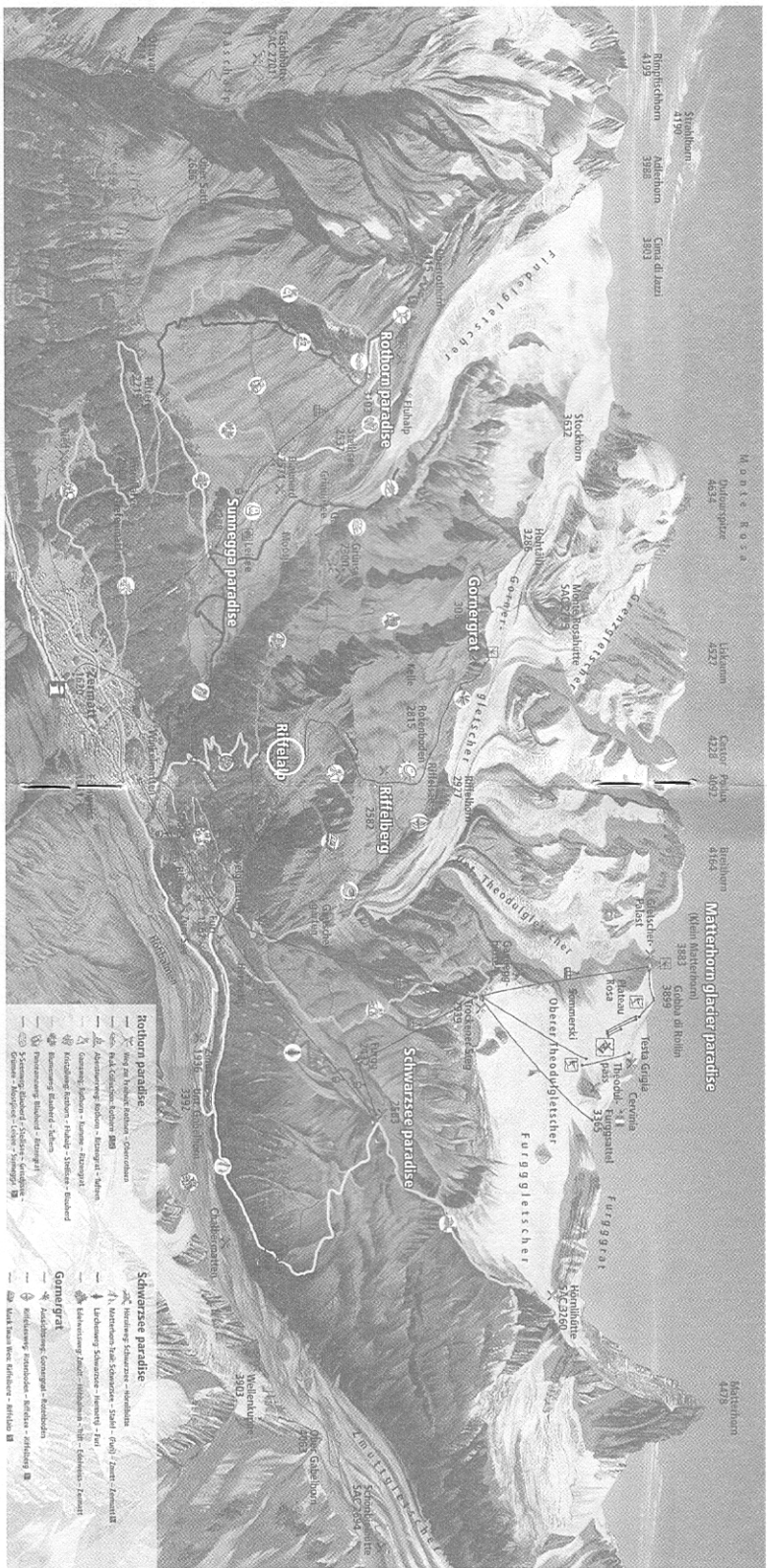
BABYSITTING

The phone system's babysitting feature allows you to move around freely on the premises.

A babysitter can be arranged upon request (early booking recommended!). The costs between CHF 20.00 and CHF 30.00 will be charged to your account.

A Playground including swings, slide and climbing tower makes a welcome outdoor diversion for children.

Children under the age of 8 travel free on all mountain cableways and the Gornergrat railway.



HIKING AROUND ZERMATT

Riffelalp lies smack in the middle of Zermatt's hiking area. 400 km of trails await you. Short or long, easy or difficult, steep or flat – from here you have countless possibilities.

In early summer – from mid-June to end-July – the splendour of the wild flowers is most enchanting. Autumn offers clear days, white peaks and a magnificent play of colours. Summer sking: the area around Klein Matterhorn is open mornings only. Riffelalp is not ideally located for this experience.



3. 2.

1.

SKIING AREA

Zermatt offers three main skiing areas: Klein Matterhorn/Cervinia, Sunnegga/Rothorn and Gornegrat.

Our Hotel is located in the Gornegrat area. From Riffelalp the following connections are highly convenient:

1. Skiing in the Klein Matterhorn area
To the left of the Hotel entrance take the run to Furi. From Furi the journey continues to Schwarzsee or Trockener Steg. In winter 2006 there will be a direct connection between Furi and Riffelberg.

2. Skiing in the Gornegrat area
Put your skis on at the hotel's doorstep and get on the train at the Riffelalp station or Landtunnel (note: not before 11:00 am). The pleasant Gornegrat skiing area is conveniently connected with the Rothorn area. The return journey takes you on skis all the way back to the hotel.

3. Sunnegga/Rothorn
From Riffelalp station take the train to Gornegrat. Fantastic downhill skiing via Kelle to Gant and from there the journey continues by gondola to Blaiberd. A wide variety of runs are available, and at Eindhelen cosy Chalet restaurants serve home-made specialties.

Enough time should be planned for the return journey from Sunnegga via Gant (warning: last ride!). If you miss this connection, returning via Zermatt is possible.

Our Concierge can arrange your ski pass in cooperation with the staff at Riffelalp station.
For ski passes of 8 days and more a passport photo is required. Children up to 8 years ride free. Identification and passport photo must be presented.

SKI SCHOOL

“Snowli” children’s ski school at Riffelberg (in skiing area no. 2):

Monday through Friday from 9:30 am to 3:30 pm for children between 4 and 6 years. Children can get on the train and be picked up directly at Riffelalp station.

Children’s ski school “Beginners Level” (skiing areas no. 2 and 3):

Monday through Friday from 9:30 am to 3:30 pm for children 6 years and older.
On Monday and Tuesday children can get on the train and be picked up directly at Riffelalp station. Wednesday through Friday a detour via Zermatt is inevitable.

Children’s ski school “Advanced Level” (skiing area no. 3):

This level is taught in two different skiing areas. Detour via Zermatt as a meeting point is inevitable.

Group lessons for adults (skiing areas no. 1, 2 and 3):

Monday through Friday. Meeting point in Zermatt.

Private lessons:

Guests get to choose the meeting point. The ideal meeting point is the Hotel. Early reservation for ski school and private instructor is recommended. You can make these bookings along with your room reservation.

Swiss Ski and Snowboard School Zermatt

for private, group and children’s lessons

www.skischulezermatt.ch

Stoked, Ski and Snowboard School

for private, group and children’s lessons

www.stoked.ch

Summit Ski & Snowboard School

for private lessons

www.summitskischool.com

Almrausch Snow Sport School

for private lessons

www.almrausch-zermatt.ch

Ski School European Snowsport

for private lessons

www.europeansnowsport.com

Prato Borini Ski & Snowboard School

for private lessons

www.pratoborini.ch

ST.-TROP-ALP

Welcome to Europe's highest spa centre.

The following facilities are available for you:

- **Indoor pool with whirlpool**
11,2 x 7,7 m, 1,38 m deep, heated to 30°C / 86°F.
- **Europe's highest outdoor pool**
8,4 x 4,2 m, offers a superb view of the Matterhorn, has 7 water-jet recliners, 6 water-jet seats and various water jets mounted on the side of the pool. The pool is heated to 35°C / 95°F.
- **Massage showers**
- **Kids Corner**
In addition to the paddling pool (30 cm deep), our Kids Corner also has a playroom equipped with child-friendly toys.
- **Sun deck**
- **Dream World**
Rest and relax in a completely different dimension.
- **Massages**
Whole-body massage, sports massage, partial-body massage, reflexology, lymph drainage and many other offers await you.
- **Soft packs on the soft-pack recliner**
Thalassotherapy, evening primrose oil, hay bath
- **Solarium**
- **Steam bath**
At 45°C / 113°F and 100% humidity, the steam bath is actually more of a vapour bath with a warm, damp climate. The steam contains ethereal oils.
- **Finishing sauna**
The Finnish sauna is a hot, dry sauna with a temperature of 85 – 90°C / 185 – 194°F and air humidity of just 10 – 15%.

- **Organic sauna**
With a temperature of 50 – 60°C / 12 – 140°F and moderate air humidity of 50%.
- **Whirlpool heated to 37°C / 99°F**
- **Footbaths**
- **Immersion bath**

- **Schönbühl cave with steam bath**
The temperatures in this steam bath are around 40 – 50°C / 104 – 122°F, with plenty of radiated heat just like from an open fireplace. Air humidity can climb to 40% at times. At regular intervals the guests can witness the spectacle of the basket of stones being lifted out of the boiler, swung around 180° and plunged into a water bath, thus generating a huge cloud of steam. The name is actually a reference to the view from the window of the cave, which looks out onto the Schönbühl mountain cabin!
- **Sun deck**
- **Relaxation room**

- **“Chrüter Grotta”**
This grotto with its saline baths and waterfalls offers a truly unique atmosphere.

MEDICAL CARE

For medical emergencies doctors and Air Zermatt are available in Zermatt. As all doctors are located in the village and need to be ready for emergencies, home visits are not possible.

The nearest hospital is located in Visp (40 min. by car from Zermatt). For first-aid treatments, we have a well-equipped in-house pharmacy.

PETS

Dogs are welcome at the hotel, although they are not allowed in the restaurant and the Pool area.

For dog charges please refer to the enclosed price list. Upon request we will put a dog basket in your room.

SPORTS EQUIPMENT RENTAL

Bayard-Sports is conveniently located in our buildings; here you can rent skis, snowboards and other equipment. A competent staff will be glad to assist you from 8:00 am to 11:00 am and from 3:00 pm to 6:00 pm. During summer mountain bikes with helmets and any climbing gear can be rented. The village has several sporting-good stores offering a large selection of sportswear and material.

ICE-RINK

Weather and temperature permitting, the rink is open for ice-stick shooting and ice-skating.

GOING OUT / NIGHT LIFE

The Rifflalp Resort is connected with the village until 11:30 pm. In winter the first train leaves Zermatt at 6:00 am and in summer at 7:10 am. There are no other transportation options.

POWER SUPPLY

220 Volt.
Adapters are available from the Reception desk for a small deposit.

CONFERENCES / EVENTS

The Rifflalp Resort is ideally suited for all kinds of events, such as family reunions, weddings etc.
For weddings the Rifflalp Chapel is an excellent choice.
For additional information, please contact our Reception desk.

THE CHURCH

Enjoy classical concerts of the highest quality.
For detailed information, please refer to our Concierge.

During the reconstruction of the 5-star Riffelalp Resort 2222 m hotel a revival of the tram operation was also considered. However, time had left its marks on the tram carriages, which made a re-commissioning of the original tram too costly. The installation of the original two-phase overhead contact line alone would not have been possible due to numerous new safety regulations.

After several options were developed, it was decided to re-establish the service with two motor cars for passenger transportation and one trailer for goods and luggage. Today, the tram is driven by a battery (80 V, 400 Ah) and two d.c. motors each delivering 10 kW. The battery is partially recharged during the electric braking operation. A hydraulic disk brake is used for stopping and mechanical braking. The parking brake consists of a spring-loaded brake.

During the reconstruction the focus was on rebuilding the trams according to their original appearance. The electrical equipment was supplied by Stimbo in Zermatt, while Visp-based Zurbruggen + Kreuzer provided the wooden superstructure. Gomergrat Bahn (GGB) was responsible for coordination, engineering, diving the authorization procedure (with the Federal Ministry of Transportation) and for the railway construction.

Since the rails had been removed many years before, the rail system had to be completely rebuilt as well. Unlike its predecessor, the tram features an attractive loop around the hotel park, a link to the cargo ramp at Riffelalp station and an access track to the hotel's own tram depot with room for two trams.

On June 12, 2001, the newly installed tram facility was approved by the federal authorities and subsequently resumed operation as Europe's highest tram after 40 years of retirement. At a maximum speed of 10 kilometres per hour hotel guests can commute leisurely and in true Belle Epoque style between Riffelalp station and the hotel. Luggage and other goods are transported on the state-of-the-art trailer.

This tram will enchant many tram and train nostalgics.

2001 Specifications

- Opening June 15, 2001
- Overall length 675,31 m
- Length of line operated 675,31 m
- New terminal loop 190,36 m
- 2 stops
- 2 switches
- Rail weight 26 kg/m
- Rail type: Vignole
- Steel sleepers approx. 40 kg each
- Rail gauge 0,80 m
- Depot for 2 trams with battery station
- Battery operation 80 Volt, 320 Ah
- Maximum speed 10 km/h

H I S T O R Y

- 1 September 1856 First Riffelalp plot purchased by Alexander Seiler.
- 1878 – 1884 Construction of the 150-bed Riffelalp Grand Hotel.
- 10 July 1884 Inauguration of the Grand Hotel for summer tourism; it soon became “the playground of European High Society”.
- 1890 Capacity of Riffelalp Grand Hotel increased to 200 beds, and several years later to 280 beds following acquisition of two annexe buildings.
- 13 July 1899 Opening of the Riffelalp tram, Europe’s highest and shortest tramway.
- February 1961 Main building completely destroyed by fire.

- 1986 – 1988 Alterations carried out on the two annexe buildings prior to the launch of the 40-bed “Berghotel Riffelalp” and “Alpenresidenz Augstkumme” with holiday apartments.
- 1988 – 1998 Riffelalp again opens to visitors.
- 1998 – 2000 New construction and alteration scheme for the present Riffelalp Resort 2222 m, offering all the services and amenities of a modern five-star hotel. Restoration of the tramway (highest in Europe) linking Riffelalp Resort 2222 m to the local station (in summer only).
- 1 December 2000 Re-opening of the Riffelalp Resort 2222 m. Property of the Sandoz-Family Foundation.